

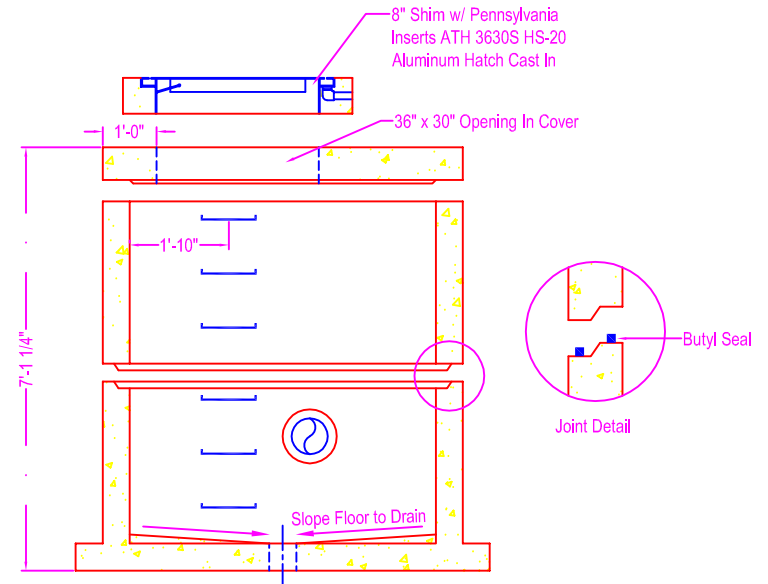
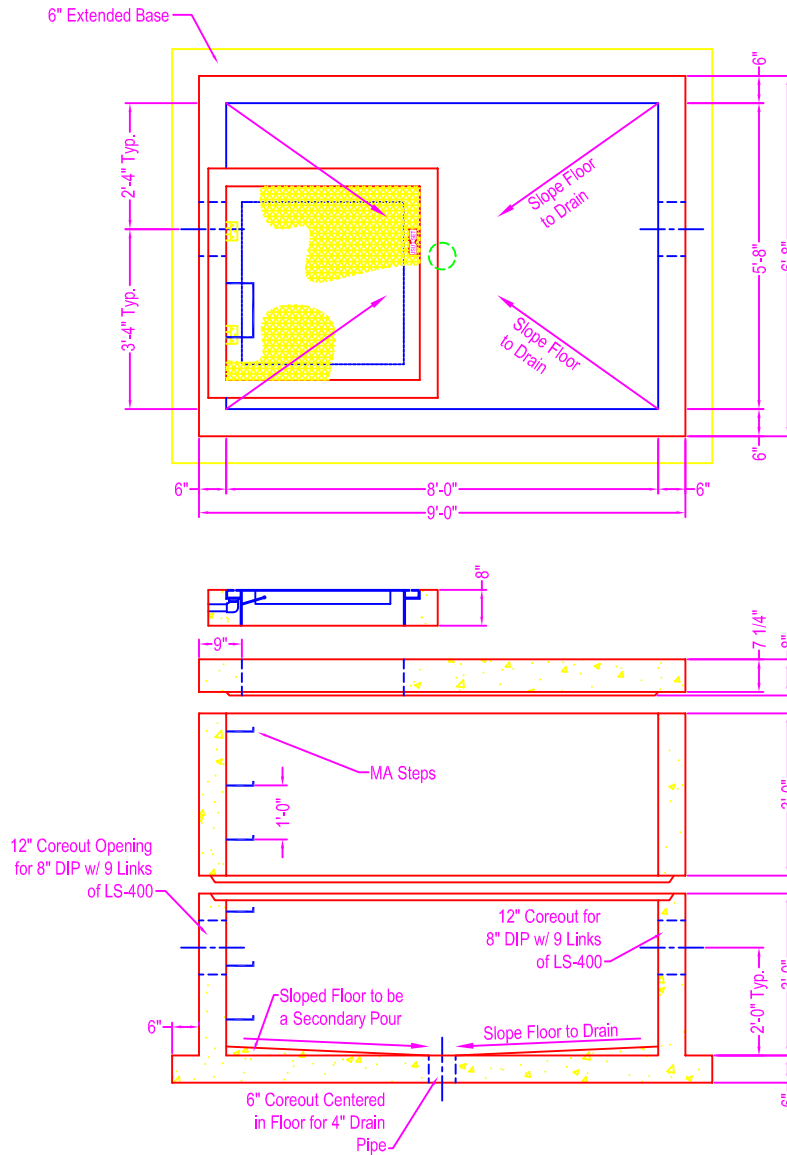
METER PIT

NOTES:

- CONCRETE: 5000 psi @ 28 days
- REF: rebar grade 60 ASTM A615
- Cover Slab - #6 rebar @ 6" o.c. in short direction
- #5 rebar @ 10" o.c. in long direction
- (1-1/2" conc cover from bottom up)
- Riser #1 - #4 rebar @ 12" o.c. each direction
- (2" conc cover from inner core)
- Base Riser - #4 rebar @ 6" o.c. each direction
- (2" conc cover from inner core)
- Base Slab - #4 rebar @ 6" o.c. each direction
- (2" conc cover from top down)
- Additional Rebar - #4 rebar bent "L's" from base to walls @ 6" o.c. (18" x 24" tails)
- #4 rebar diamond around all wall openings
- extra reinforcing around opening in cover slab
- OPENINGS: coreout pipe openings w/ Link Seal as shown on detail - see spec sheet for Link Seal
- JOINT SEALANT: Con-Seal CS-102 butyl seal @ joints
- STEPS: MA Industries polypropylene steps - see spec sheet
- HATCH: Pennsylvania Inserts ATH 3630S - see spec sheet
- COATING: coat exterior w/ Blackhawk epoxy
- LIFTERS: 4 ton Dayton Superior Swift Lifters

Weights:

- Cover Slab - 6,600 #
- Riser #1 - 7,000 #
- Base & Riser - 14,000 #



Zeiser
Wilbert
 VAULT, INC.
 CONCRETE PRODUCTS

750 Howard Street Elmira, NY 14904
 Fax: (607) 737-0291
 Phone: (607) 733-0568
 1-800-472-4335

Title: Meter Pit

Scale: Not To Scale

Drawn By: JPS

Drawing No.: 06160900

Date: 6-19-09