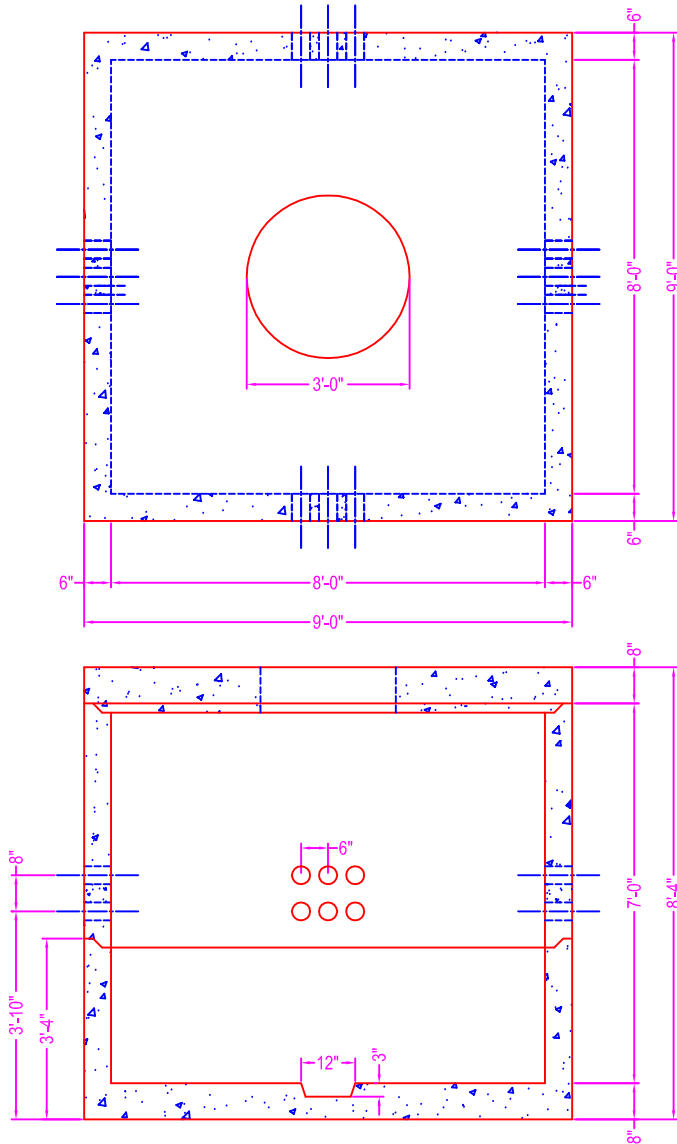


This drawing is a typical tel-comm manhole. ZWV can build to job specifications.



## TEL - COMM MANHOLE

### NOTES:

- CONCRETE: 5000 psi @ 28 days
- REF.: #4 rebar @ 8" o.c. each way in walls and base
- #5 rebar @ 8" o.c. each way in bottom mat of cover
- #4 rebar @ 12" o.c. each way in top mat of cover
- 4" terminators 6 ea in all sides
- 12" x 3" sump centered in base
- 3'-0" opening in cover

	750 Howard Street Elmira, NY 14904 Fax: (607) 737-0291 Phone: (607) 733-0568 1-800-472-4335	<b>Title: TEL-COMM MANHOLE</b>	Drawn By: JPS
		Scale: Not To Scale	Drawing No.: 1069
			Date: 11-3-99