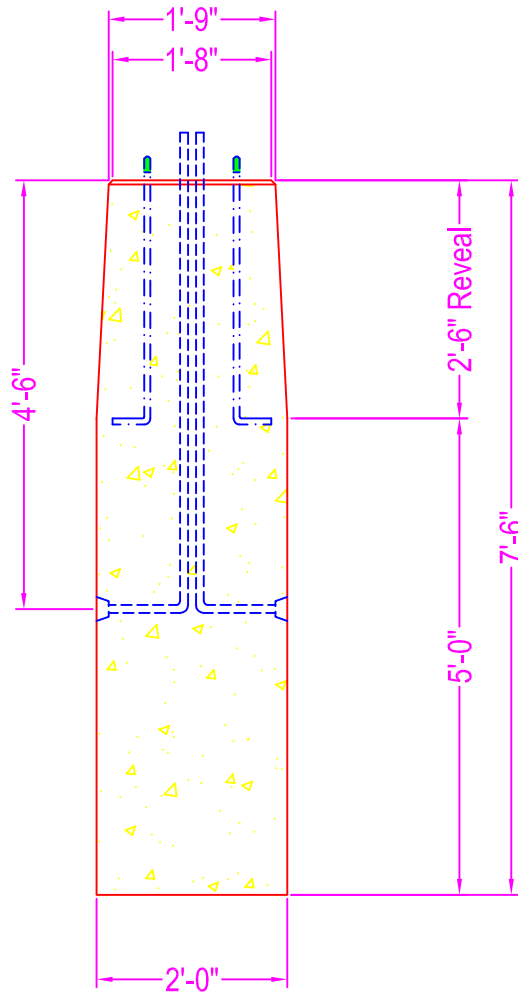
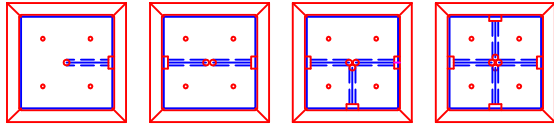


Typical Conduit Directions



TAPERED LIGHT POLE BASE

NOTES:

CONCRETE: 5000 psi @ 28 days

REF: 8ea - #5 rebar in vertical direction

#4 rebar @ 12" o.c. in horizontal direction

3" clearance form all sides

CHAMFER: all exposed edges

Contractor to supply ZWV with all conduits,
anchor bolts, and templates

Zeiser



Wilbert
VAULT, INC.

CONCRETE PRODUCTS

750 Howard Street Elmira, NY 14904

Fax: (607) 737-0291

Phone: (607) 733-0568

1-800-472-4335

Title: Tapered Light Pole Base

Scale: Not To Scale

Drawn By: JPS

Drawing No.: 02140900

Date: 2-24-09