

# SEPTIC TANK ST-6500

**NOTES:**

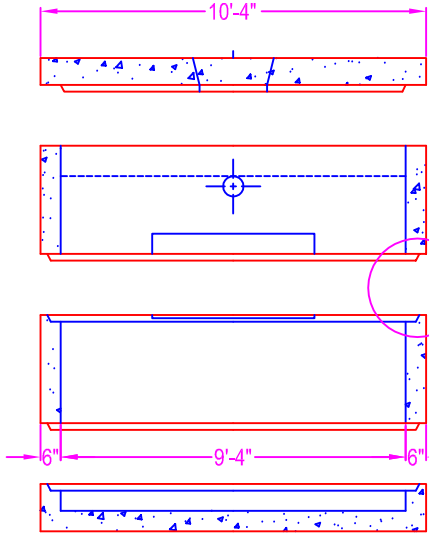
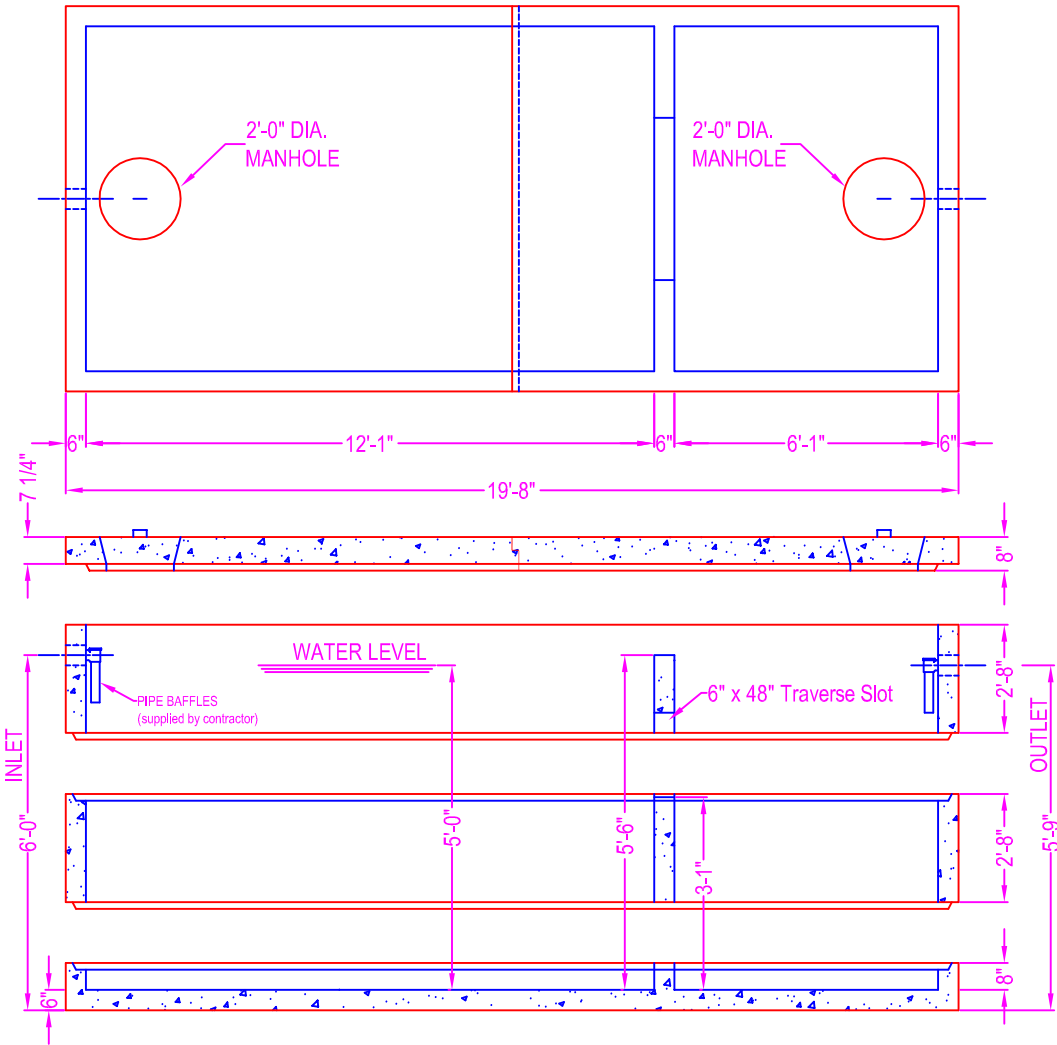
- CONCRETE: 5000 psi @ 28 days
- REF: rebar grade 60 ASTM A615
- ENTRAINED AIR: 5% to 8%
- DESIGN LOAD: AASHTO design
- LIVE LOAD: H20 traffic rating
- PIPE OPENINGS:

- pipe gasket seals
- 4" PVC - Kor-N-Seal boot
- 6" PVC - Kor-N-Seal boot
- 8" PVC - Kor-N-Seal boot
- grout filled opening
- 4" PVC - 6" coreout (grout filled in field)
- 6" PVC - 8" coreout (grout filled in field)
- 8" PVC - 12" coreout (grout filled in field)

The ultimate watertightness of the tank (grout filled pipe openings and section joint) is the responsibility of the installing contractor.

**WEIGHTS:**

- Base: 3.76 cy = 15,800 # (approx)
- Walls: 7.40 cy = 31,000 # (approx)
- Cover: 5.02 cy = 21,000 # (approx)



Contractor to purge interior joint w/ hydrolic non-shrink grout once tank is set in place and given time to settle

6" Wide Butyl Wrap

Butyl Seal

**JOINT DETAIL**

Joint Sealant  
 Butyl Seal - Con Seal CS-102 (1") supplied by ZWV  
 Butyl Wrap - Con Seal CS-213 (6" wide) supplied by ZWV (optional)  
 Hydraulic non-shrink grout supplied and applied by contractor

<p><b>Zeiser</b>  <b>Wilbert</b>          VAULT, INC.          CONCRETE PRODUCTS</p>	750 Howard Street Elmira, NY 14904 Fax: (607) 737-0291 Phone: (607) 733-0568 1-800-472-4335	<b>Title: ST-6500 H20 Traffic</b>	Drawn By: JPS
	<b>Scale: Not To Scale</b>	Drawing No.: 01050918	Date: 1-5-09