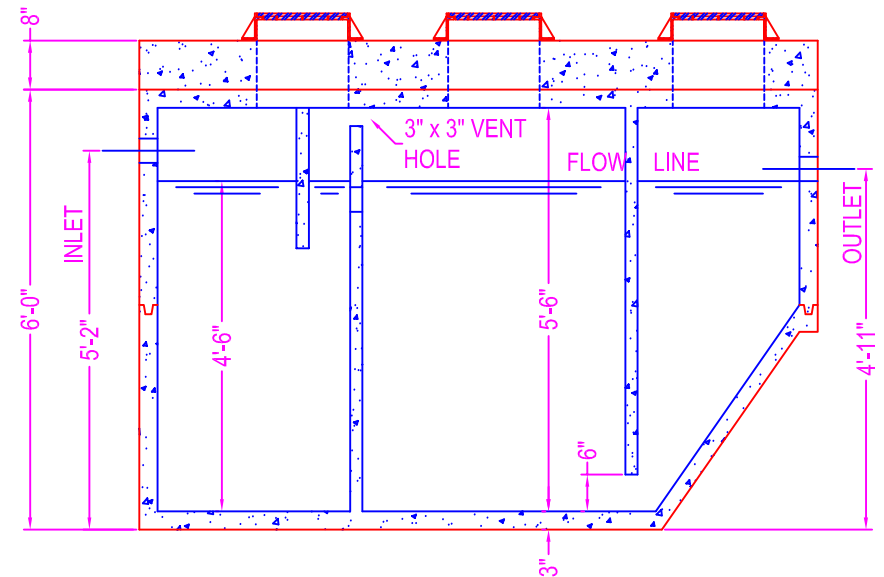
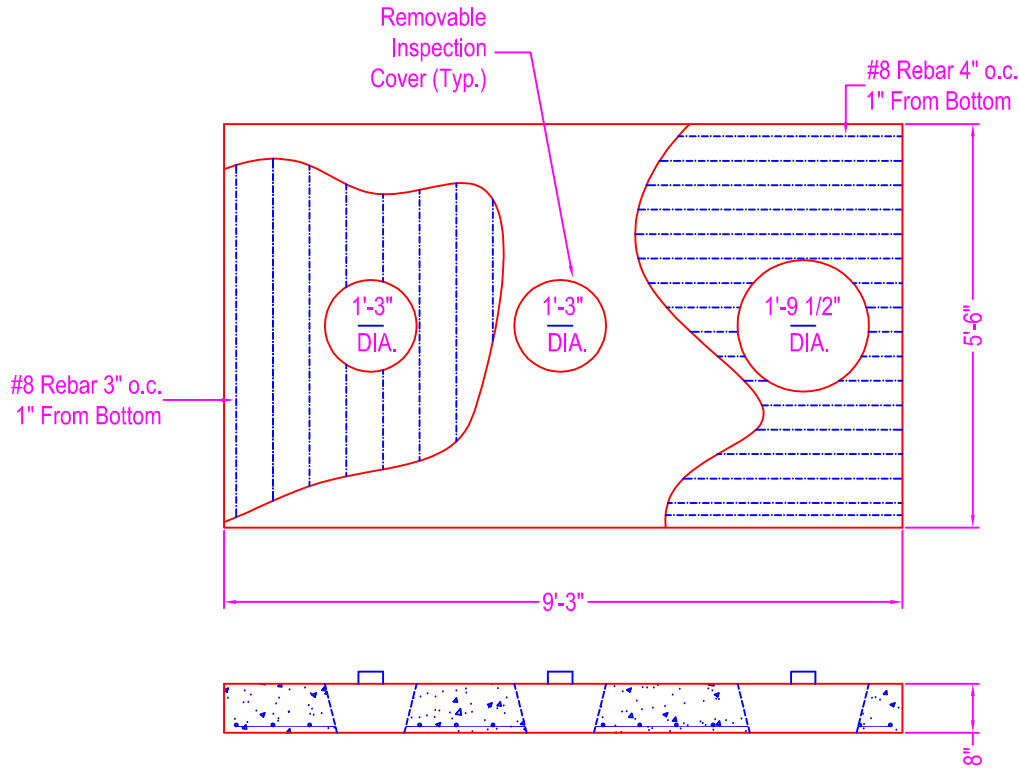


# OT - 1200 COVER HS - 20 LOADING

NOTES:

CONCRETE: 5000 psi @ 28 days

Contractor has the option of purchasing castings to set on top of cover.



	750 Howard Street Elmira, NY 14904 Fax: (607) 737-0291 Phone: (607) 733-0568 1-800-472-4335	<b>Title: OT-1200 HS20 COVER</b>	Drawn By: JPS
		Scale: Not To Scale	Drawing No.: 1041
			Date: 12-23-99