

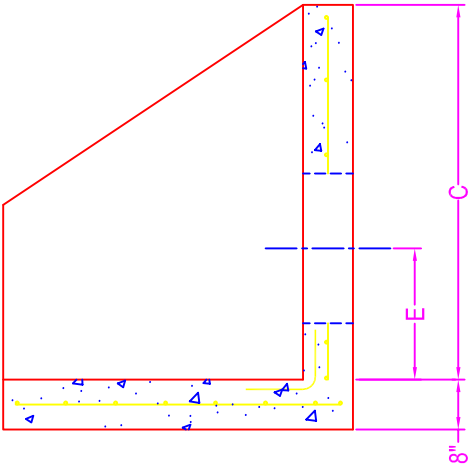
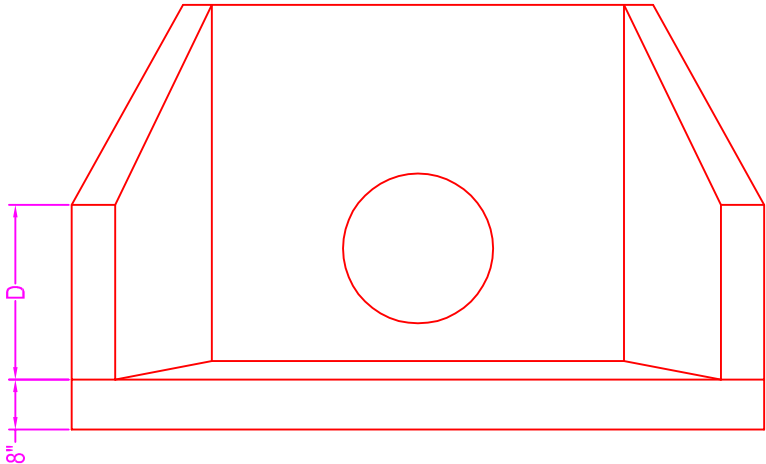
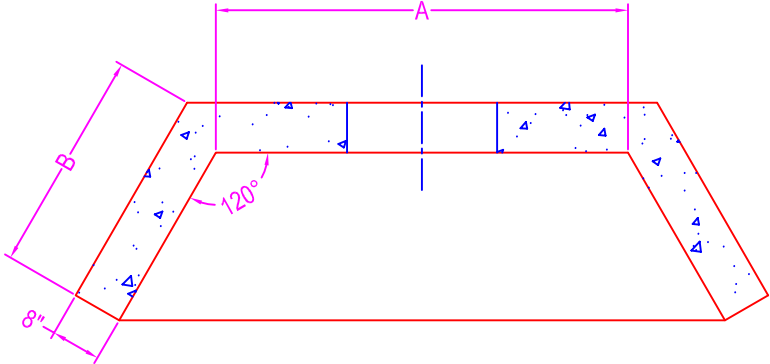
WINGWALL w/ APRON


NOTES:

- CONCRETE: 5000 psi @ 28 days
- REF: #4 rebar @ 8" o.c. each way in base
- #5 rebar tails from base to wall
- #4 rebar @ 12" o.c. each way in walls
- OPENING: corecut; pipe o.d. plus 4"

Dimensions:

- A =
- B =
- C =
- D =
- E =
- Opening =



| | | | |
|---|--|---------------------------------|---------------|
|  | 750 Howard Street Elmira, NY 14904 Fax: (607) 737-0291 Phone: (607) 733-0568 1-800-472-4335 | Title: Wingwall w/ Apron | Drawn By: JPS |
| | Scale: Not To Scale | Drawing No.: 05040100 | Date: 5-4-01 |