

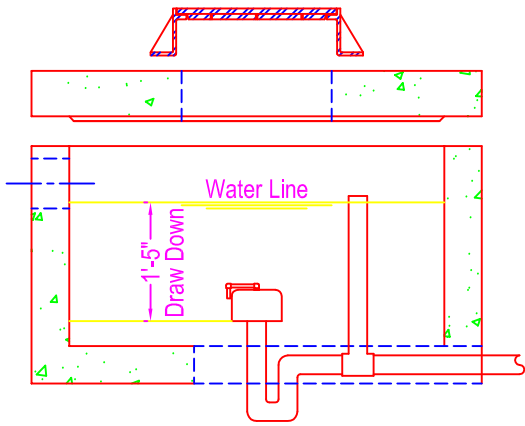
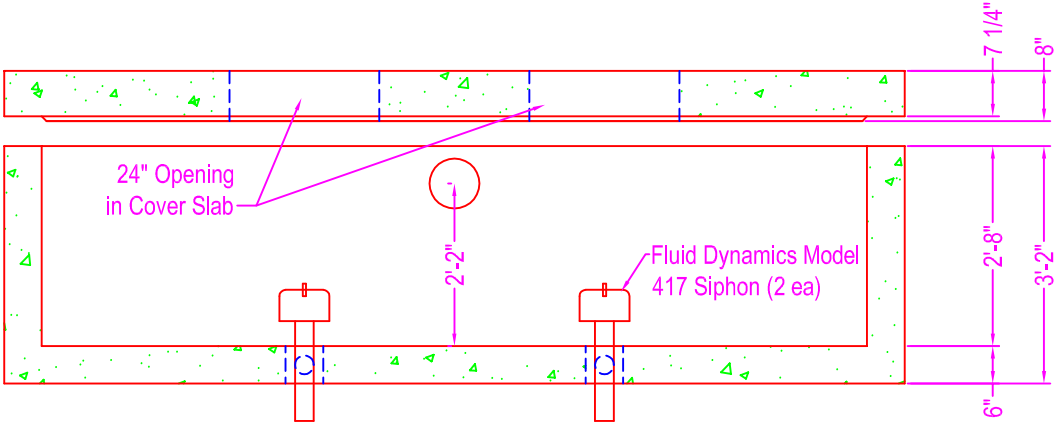
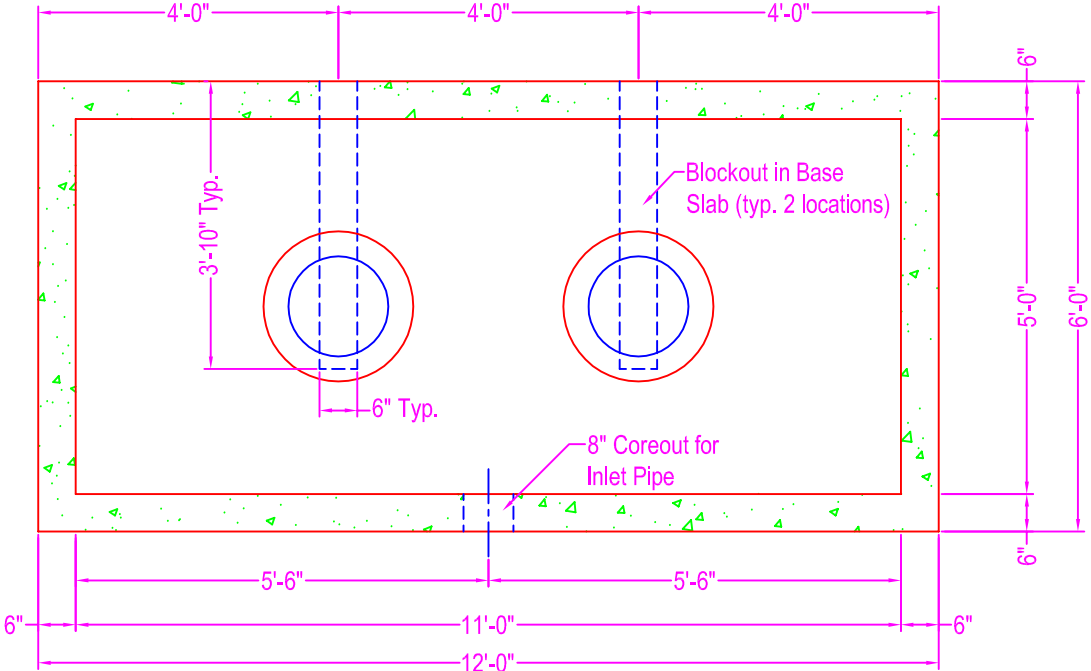
# DOSING SIPHON CHAMBER

**NOTES:**

- CONCRETE: 5000 psi @ 28 days
- REF: #4 rebar @ 8" o.c. each way in base and walls
- #5 rebar @ 8" o.c. each way in cover slab
- ENTRAINED AIR: 5% to 8%
- DESIGN LOAD: 300 psf / non-traffic
- LIVE LOAD: N/A
- PIPE OPENINGS: coreout pipe opening contractor to grout fill
- SIPHON: Fluid Dynamics model 417
- DRAW DOWN: 17"
- GALLON/DISCHARGE: 583 gallons
- TANK CAPACITY: 760 gallons from inlet pipe invert to outlet pipe invert

**WEIGHT:**

- Base & Walls: 12,700#
- Cover Slab: 7,500#



**Zeiser**  
**Wilbert**  
 VAULT, INC.  
 CONCRETE PRODUCTS

750 Howard Street Elmira, NY 14904  
 Fax: (607) 737-0291  
 Phone: (607) 733-0568  
 1-800-472-4335

**Title: Dosing Chamber**

**Scale: Not To Scale**

Drawn By: JPS

Drawing No.: 03230900

Date: 3-23-09