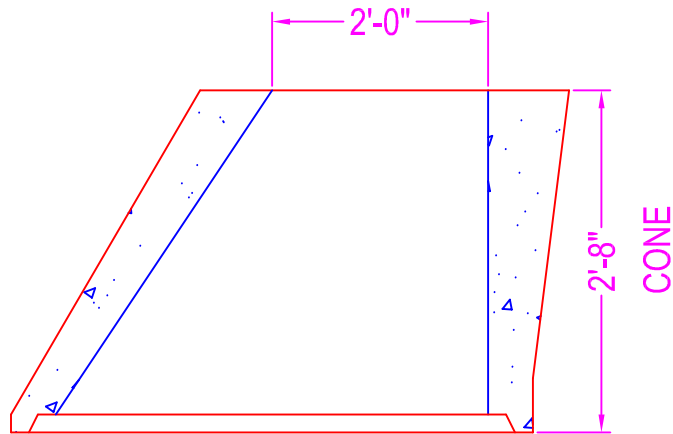


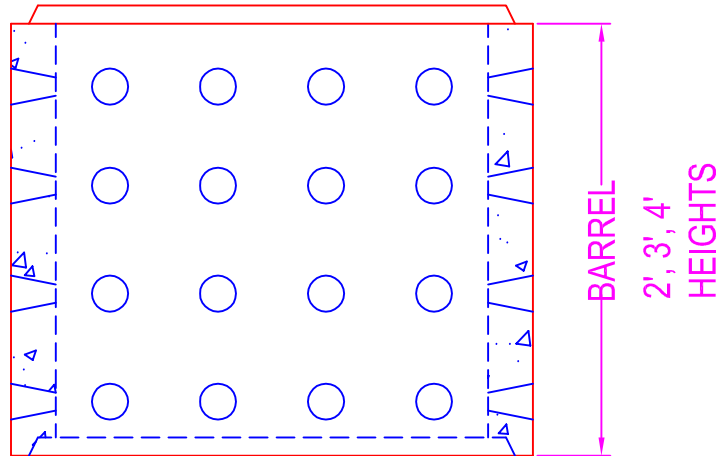
DRYWELL 4'-0" DIA.

NOTES:

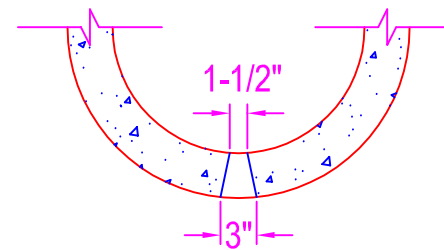
CONCRETE: 5000 psi @ 28 days
 POLYPROPYLENE FIBERS
 BASE: #3 rebar @ 12" o.c.
 DRAIN HOLES: 12" o.c.



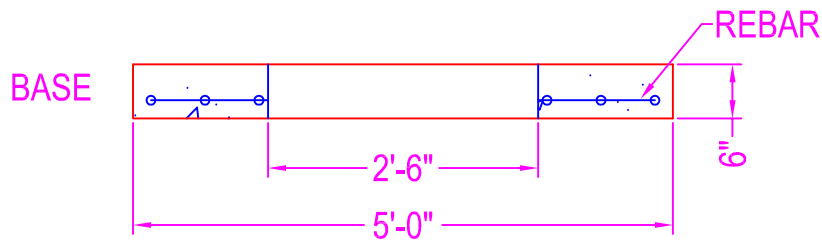
2'-8"
CONE



2', 3', 4'
BARREL
HEIGHTS




DRAIN HOLE
DETAIL



BASE

REBAR

	750 Howard Street Elmira, NY 14904 Fax: (607) 737-0291 Phone: (607) 733-0568 1-800-472-4335	Title: 4' Dia. Drywell w/ Cone	Drawn By: JPS
		Scale: Not To Scale	Drawing No.: 1037
			Date: 12-13-99