

CATCH BASIN

NOTES:

ASTM - 478

CONCRETE: 5000 psi @ 28 days

REF.: #3 rebar base and walls

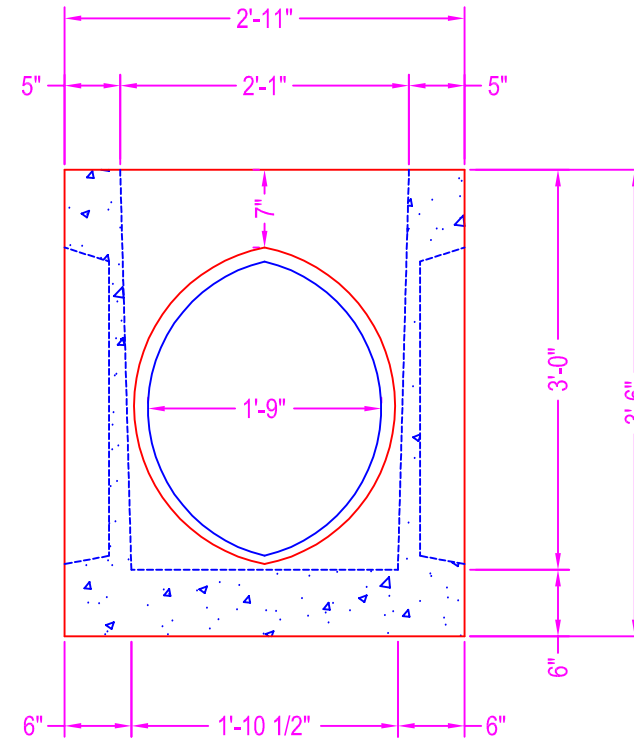
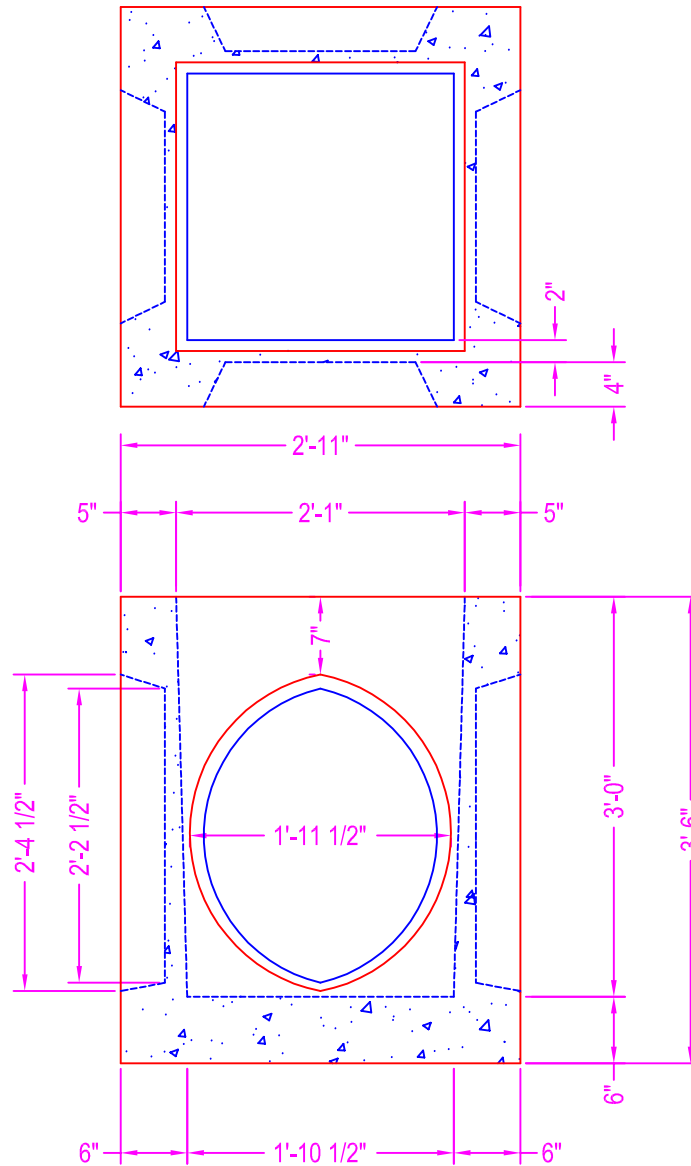
fibermesh in mix design

KNOCKOUT AREA: 26 1/2" x 21" i.d.

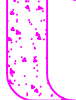
all 4 sides

LOADING: HS-20 Design

Walls Taper From 5" to 6"



Zeiser



Wilbert
VAULT, INC.

CONCRETE PRODUCTS

750 Howard Street Elmira, NY 14904

Fax: (607) 737-0291

Phone: (607) 733-0568

1-800-472-4335

Title: 2 x 2 CATCH BASIN

Scale: Not To Scale

Drawn By: JPS

Drawing No.: 1051

Date: 12-31-99